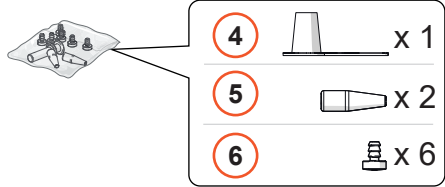
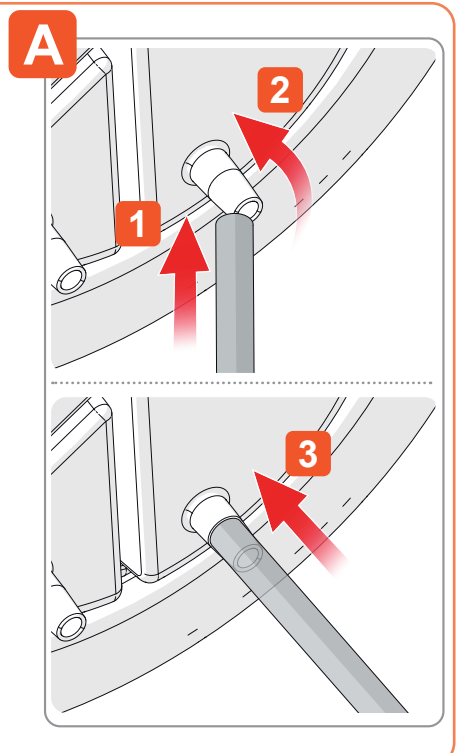
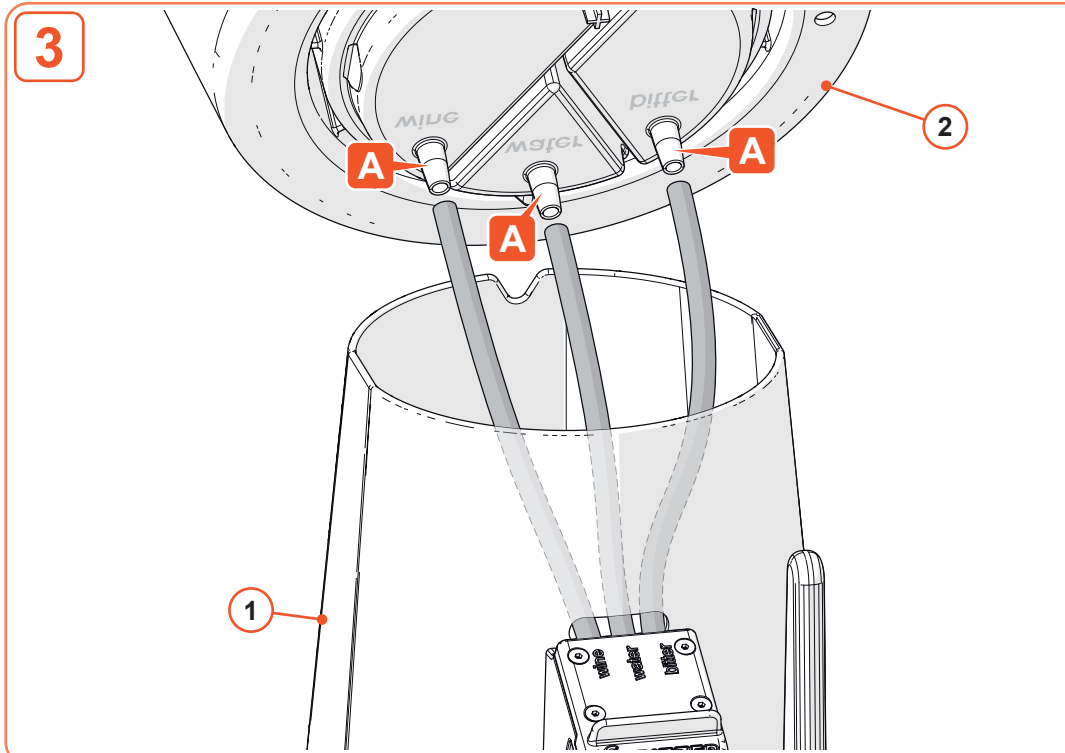
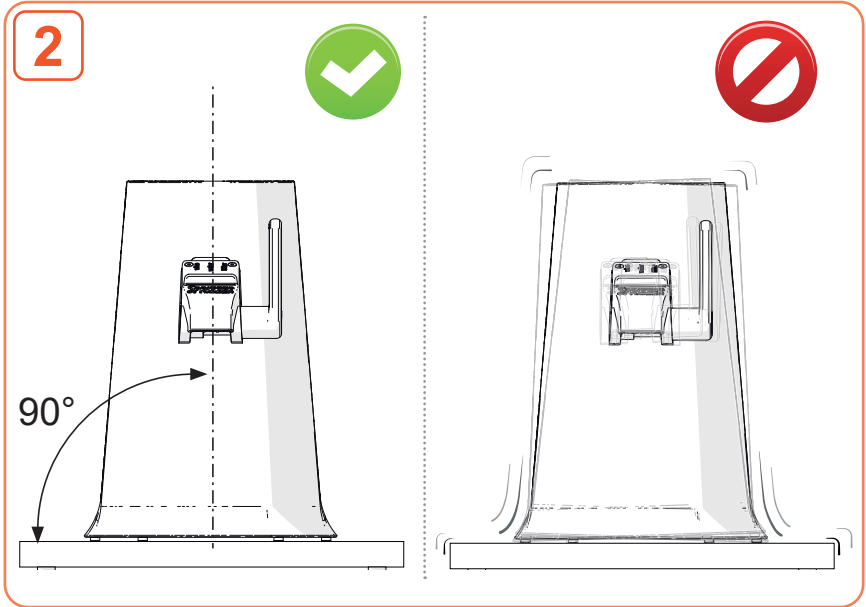
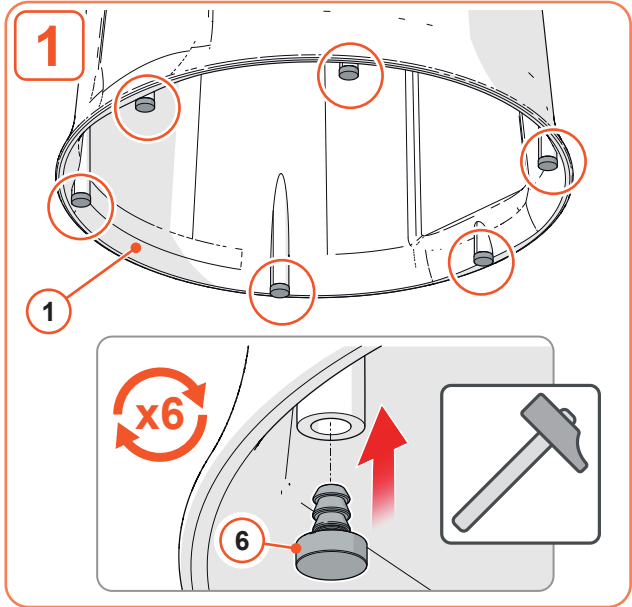


! Conservare il materiale dell'imballaggio (sacchetti di plastica) fuori dalla portata dei bambini.
 Keep packaging material (plastic bags) out of the reach of children.

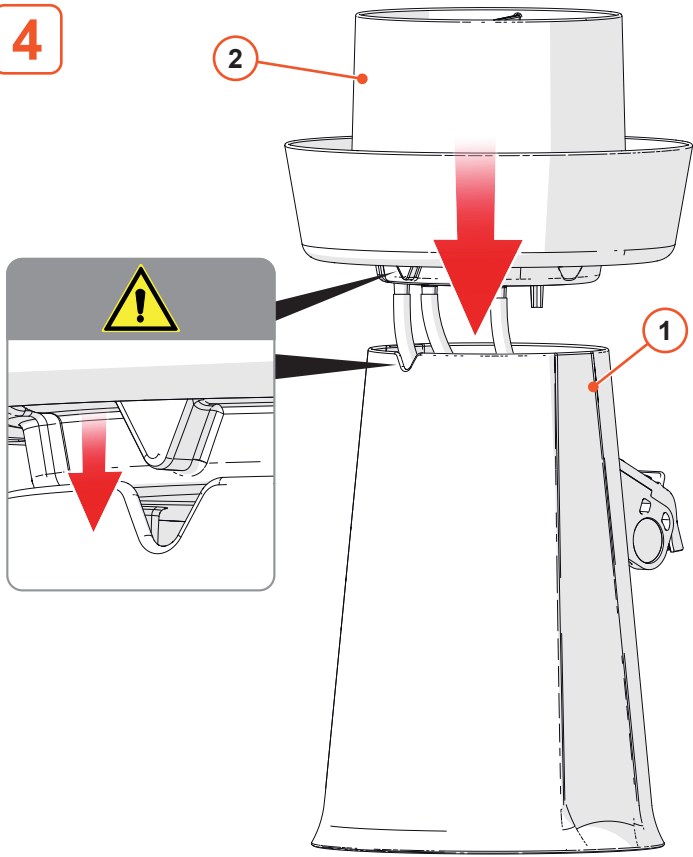
1 Base	Base
2 Serbatoio	Tank
3 Coperchio	Lid
4 Tappo di scarico	Drain cap
5 Tappi conici	Tapered caps
6 Piedi antiscivolo	Rubber foot



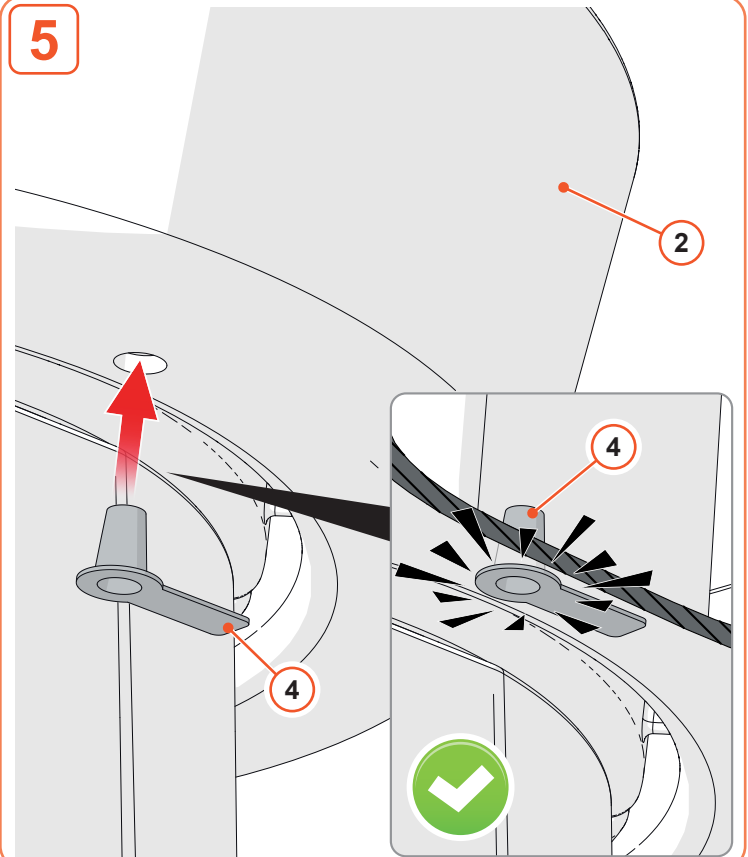
Montaggio - Assembly



4



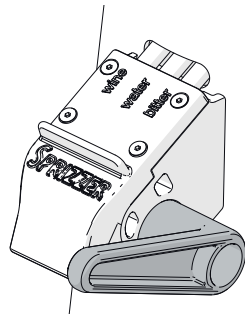
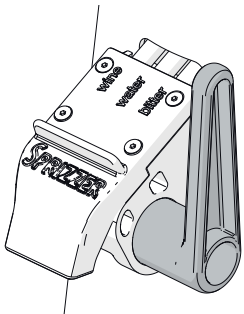
5



Usò - Use

CHIUSO - CLOSED

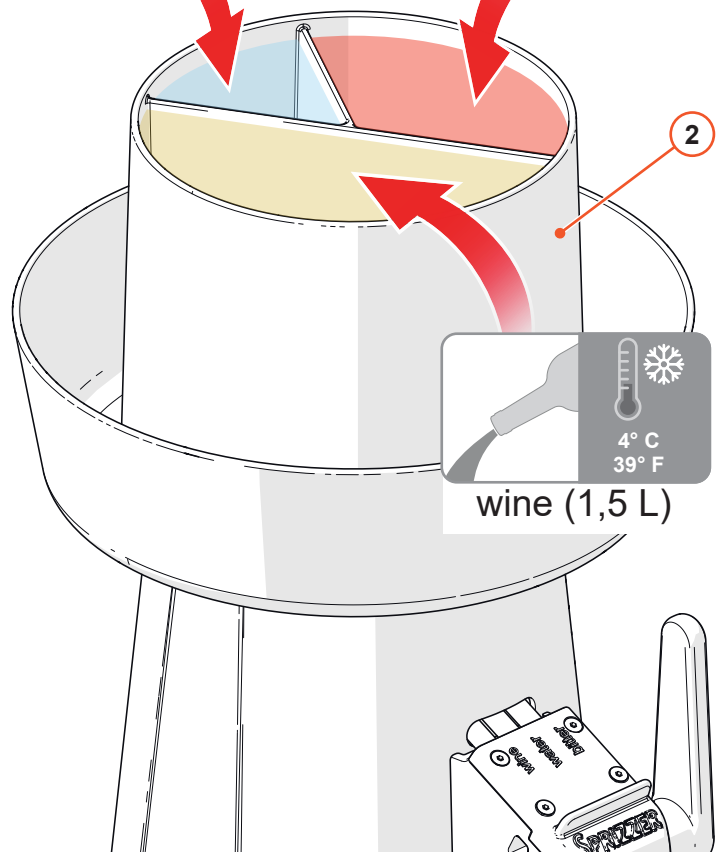
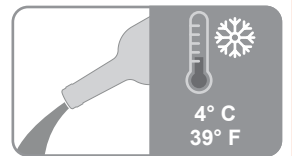
APERTO - OPEN



Chiudere prima del riempimento.
Close before filling.

sparkling water (0,5 L)

bitter (1 L)

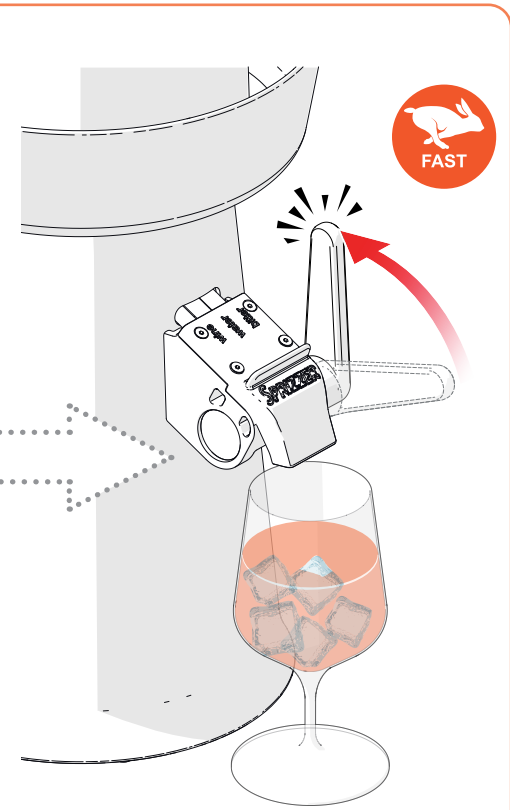
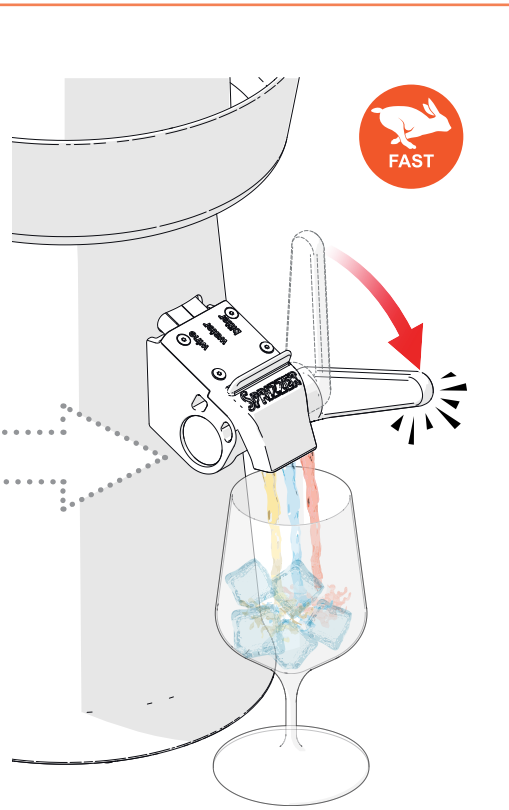
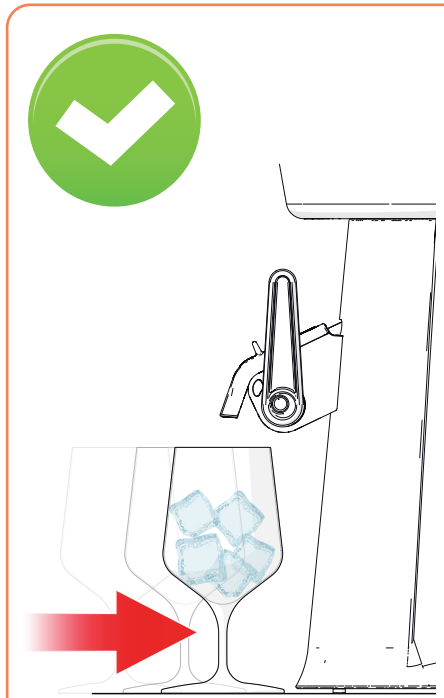
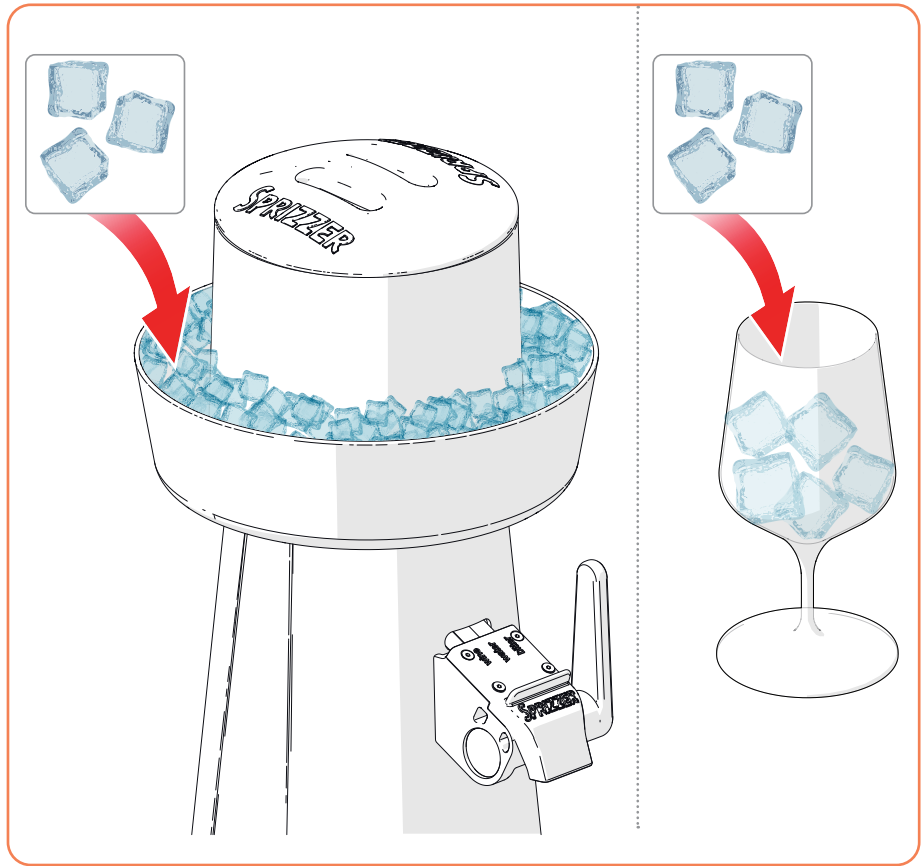
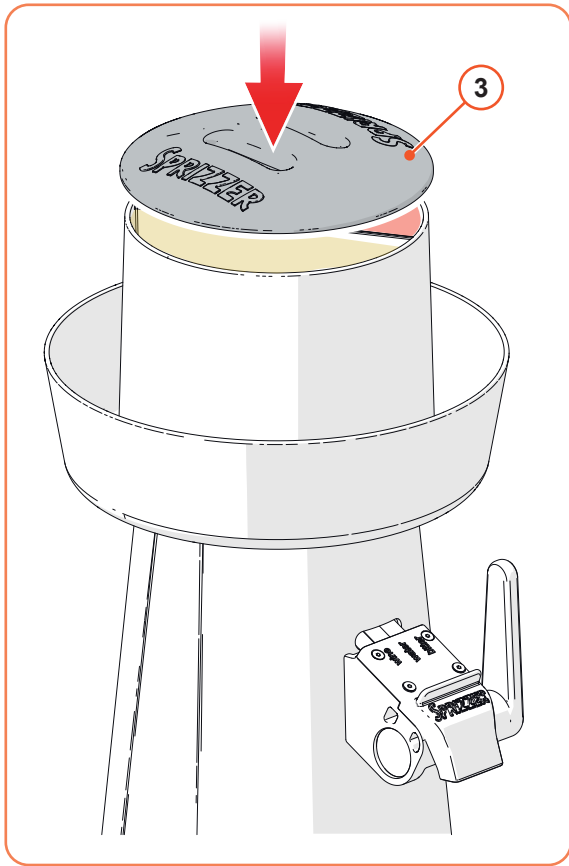


- Il vino e il bitter devono essere freddi.
- Versare il vino lentamente per evitare di fare troppa schiuma.

Durante l'uso di Sprizzer prestare attenzione al livello degli ingredienti e rabboccare quando necessario.

- The wine and bitter must be cold.
- Pour the wine slowly to avoid making too much foam.

While dispensing, pay attention to the level of the ingredients and refill as needed.



Avvicinare il bicchiere in modo che sia posizionato sotto l'estremità dell'erogatore.

Position the glass under the dispenser outlet.

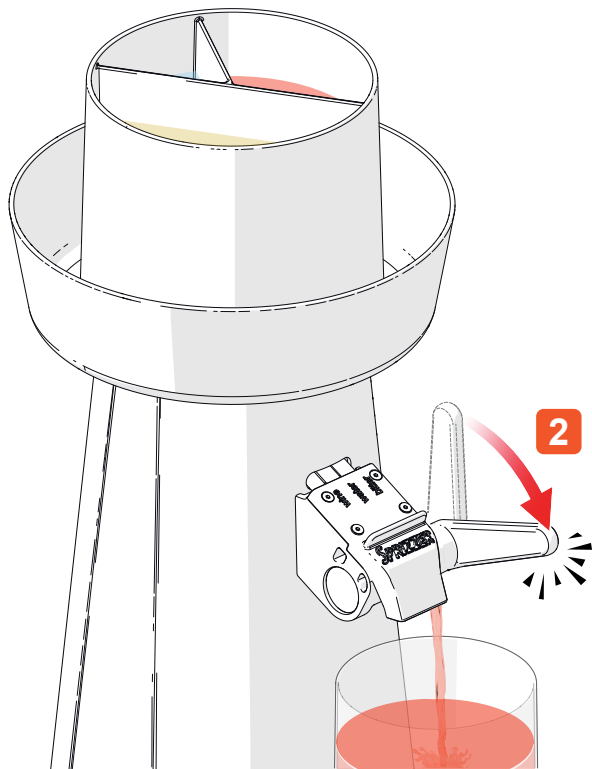
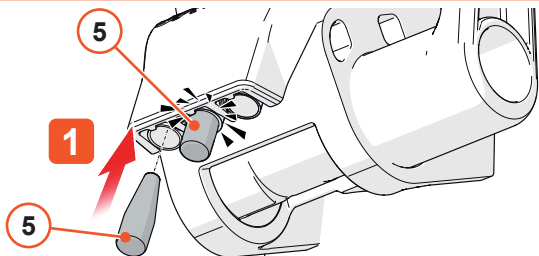
Abbassare velocemente e completamente la leva fino a fine corsa per garantire il corretto dosaggio degli ingredienti.

Lower the lever quickly and all the way down, to ensure that the correct dose of ingredients is dispensed.

Quando si è raggiunto il riempimento desiderato, riportare VELOCEMENTE la leva fino alla posizione iniziale di chiusura.

When the desired level is reached, QUICKLY raise the lever again to the closed position.

Recupero bitter - Bitter recovery



Se alla fine dell'evento sono rimasti degli ingredienti nei serbatoi, è possibile recuperare il bitter:

- 1) inserire i tappini nei tubi "wine" e "water"
- 2) abbassare la leva per recuperare il bitter
- 3) chiudere la leva

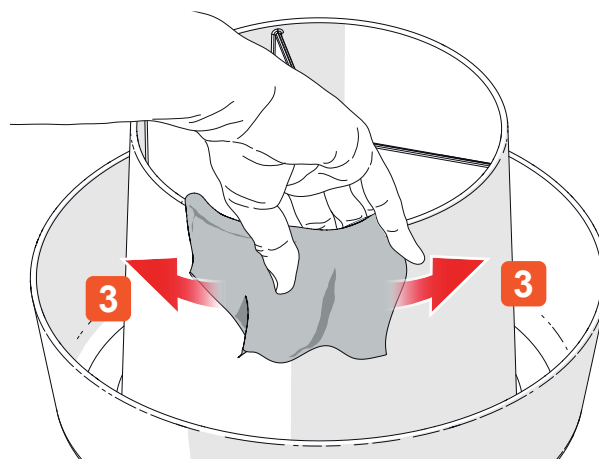
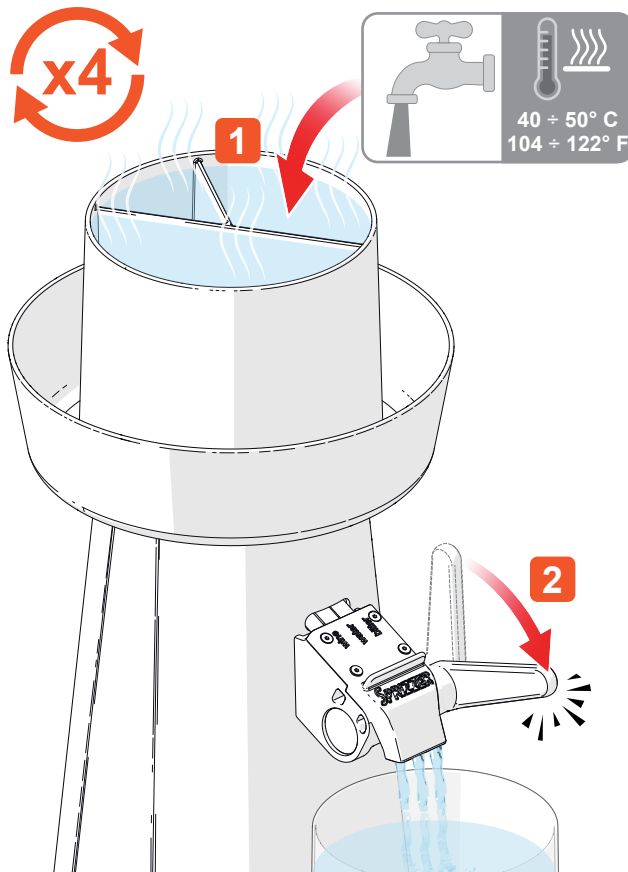
Vino e acqua non vengono recuperati.

If any ingredients are left in the tanks at the end of the event, you can drain and recover the bitter by:

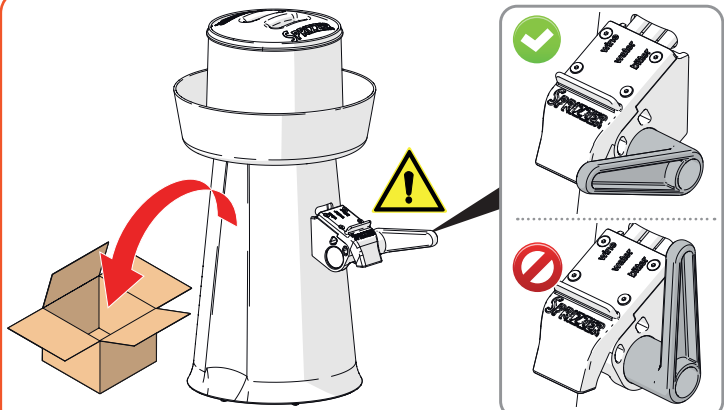
- 1) inserting the supplied caps in the "wine" and "water" tubes
- 2) lowering the lever to drain the bitter
- 3) closing the lever

Wine and sparkling water cannot be recovered.

Pulizia - Cleaning



Conservazione - Storage



Dati tecnici - Technical data

Peso a vuoto	3 Kg
Capacità totale serbatoio	3 L
Altezza (montato)	54 cm
Altezza (smontato)	38 cm
Diametro	28 cm

Empty weight	3 Kg
Total tank capacity	3 L
Height (assembled)	54 cm
Height (disassembled)	38 cm
Diameter	28 cm

SPRIZZER

Sprizzer srl - Via Mandruzzato 2b
31100 Treviso, Italia
CF e P.IVA 05314210260
www.sprizzer.com - info@sprizzer.com



Istruzioni - Instructions